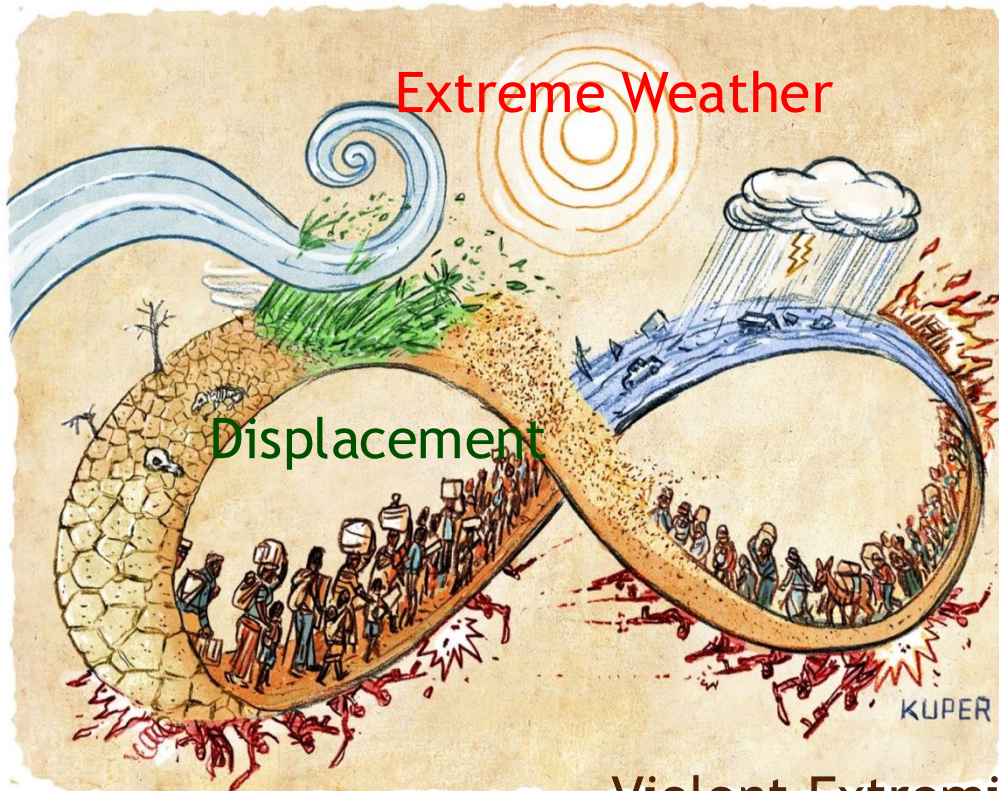




# Climate Related Disaster Management Recommendations

*PCC 7 March 2025*

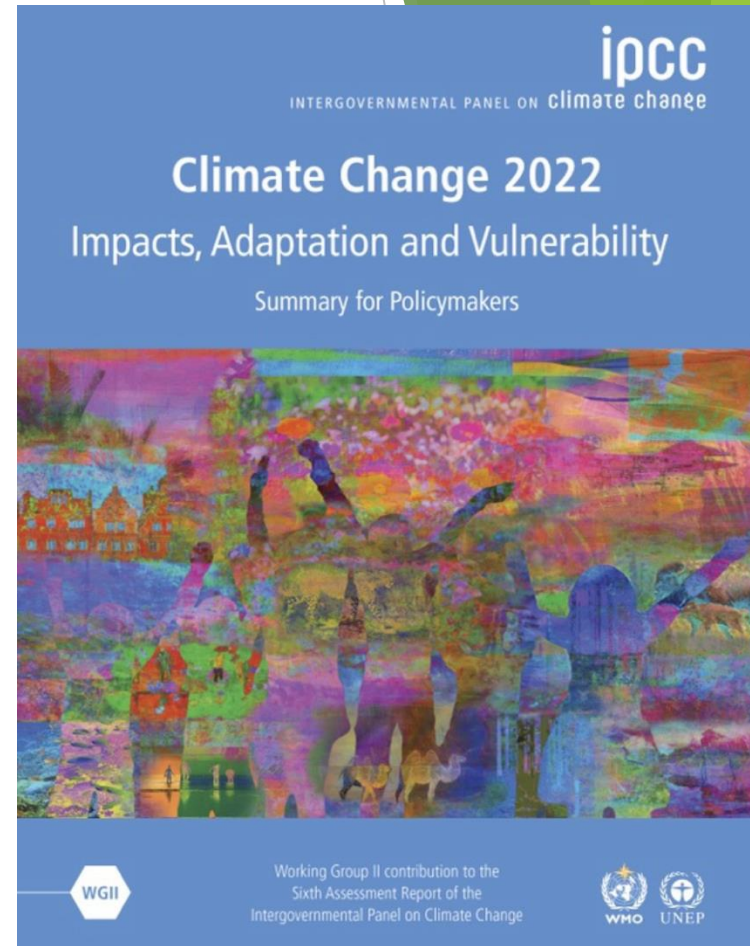
# IPCC 6 Assessment Report



ICRC Report

Violent Extremism

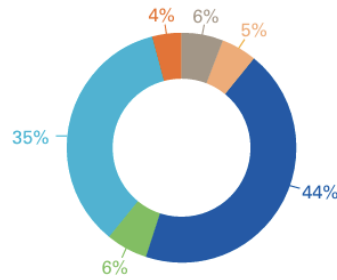
kuper/7cartoonstock.com



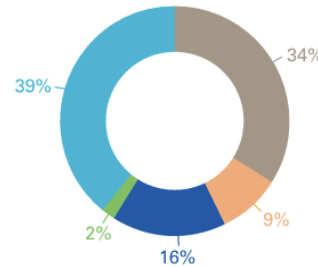
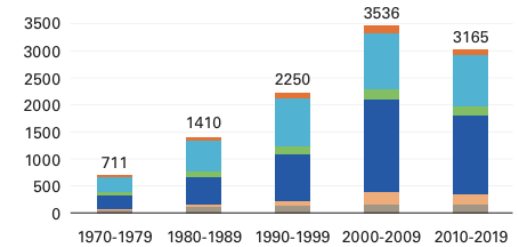
# WMO 1970-2019 data Losses from weather, climate and water extremes

- **11 072**  
**Disasters**
- **2.06m** deaths
- **US\$ 3.6 trillion**  
**in Economic losses**

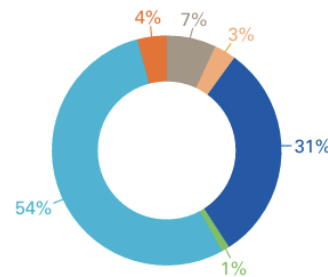
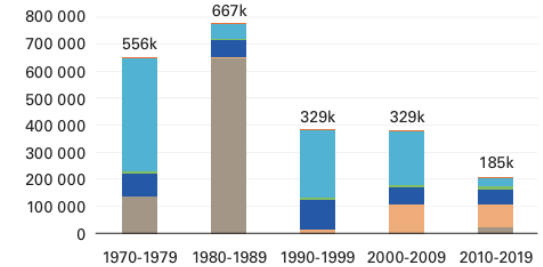
2019 - 1.1°C above PIL  
2024 - 1.4°C above PIL



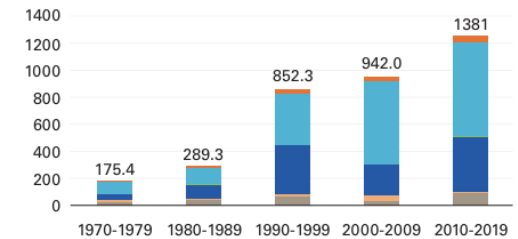
(a) Number of reported disasters  
Total = 11 072 disasters



(b) Number of reported deaths  
Total = 2 064 929 deaths



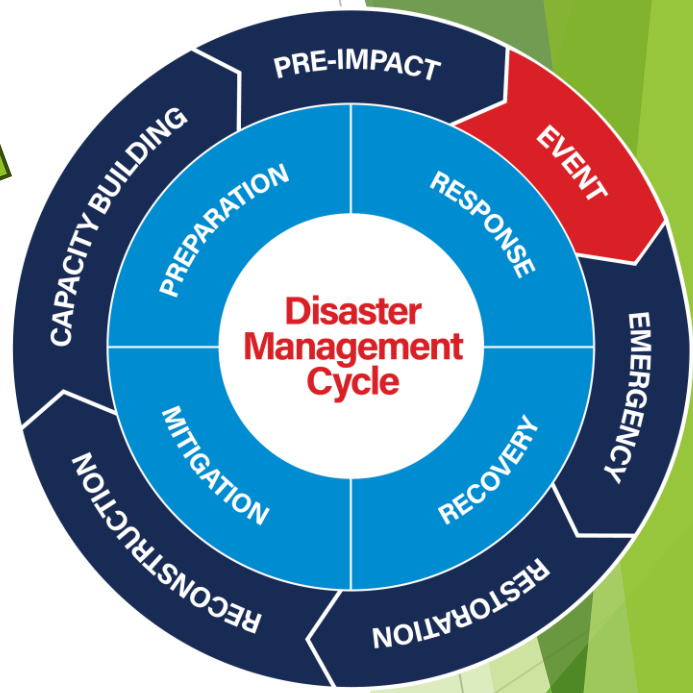
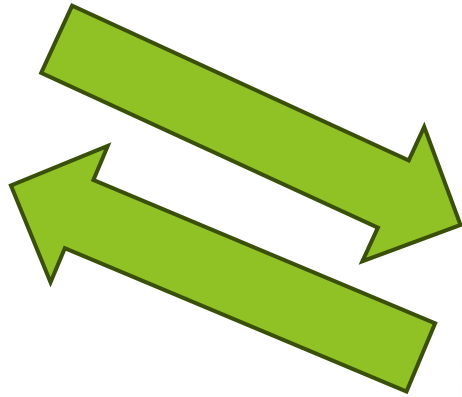
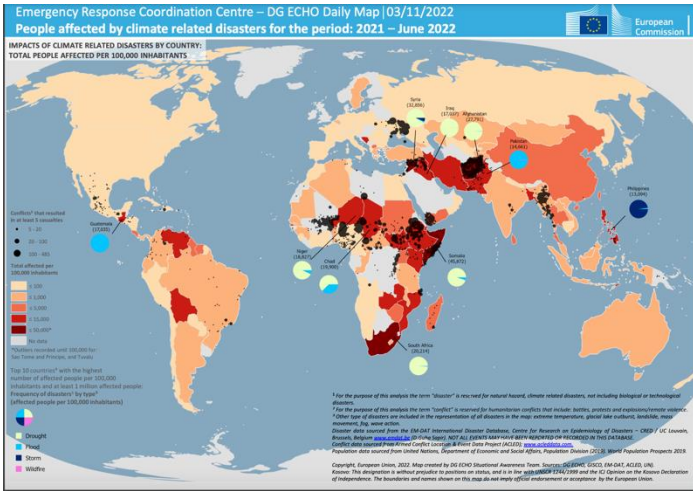
(c) Reported economic losses in US\$ billion  
Total = US\$ 3.6 trillion



■ Drought ■ Extreme temperature ■ Flood ■ Landslide ■ Storm ■ Wildfire

Figure 4. Distribution of (a) number of disasters, (b) number of deaths and (c) economic losses by hazard type by decade globally





# PCC Workplan in the the climate related DM domain

## CRD Pathways



Sustainable Resourcing

# Overview of Disaster Management Strengths

## National Disaster Management Centre

Over 200 plans integrating climate data



## Legislative Framework

Aligns with global frameworks



## Early Warning Systems

Critical role of South African Weather Service



## Community-Based Risk Reduction

Public awareness and municipal strategies

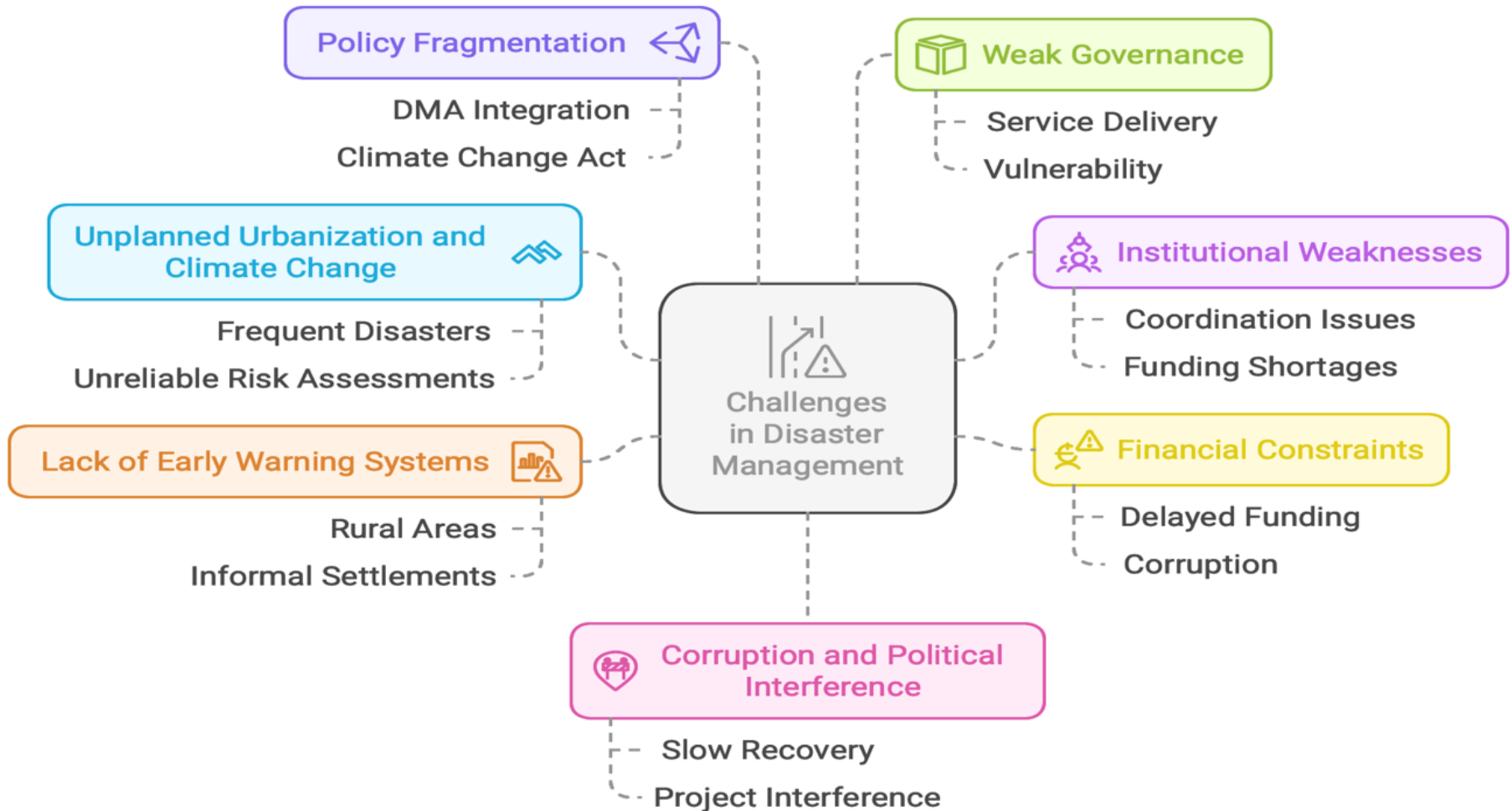


## Integration with Development Planning

Linked to Integrated Development Plans



# Challenges in Disaster Management



# The PCC Recommendations

Governance  
Reform

National  
Agency  
Development

Integration of  
Disaster Man  
and  
Development  
Planning

Institutionalize  
subsidiarity

8





# The PCC Recommendations

Disaster Risk  
Financing  
Reform

Transparent  
mechanisms  
for use of  
funds

Multi-partner  
participation

Sustainable &  
Innovative  
Funding

# The PCC Recommendations

Management  
Information  
System

Early Warning  
System(s)

Citizen  
Science

Data and  
Knowledge  
Management

# The PCC Recommendations

Governance  
Reform

Data &  
Knowledge Man

Sustainable &  
Innovative  
Funding





Thank You