

# COMMUNITY & SOCIAL SERVICES



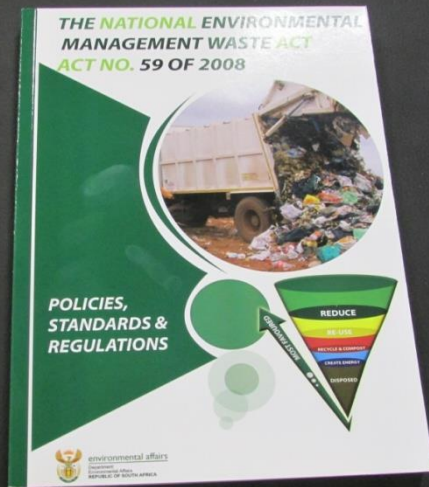
## GSDM CC STRATEGY & ITS IMPLEMENTATION PLAN



# LEGISLATIVE MANDATES



- RSA Constitution
- NEMA (107 of 1998) as amended
- SEMAs such as:-
- NEM:Waste Act (59 of 2008) as amended
- Other Relevant Acts & Documents
- GSDM Bylaws as amended



NEM:WA

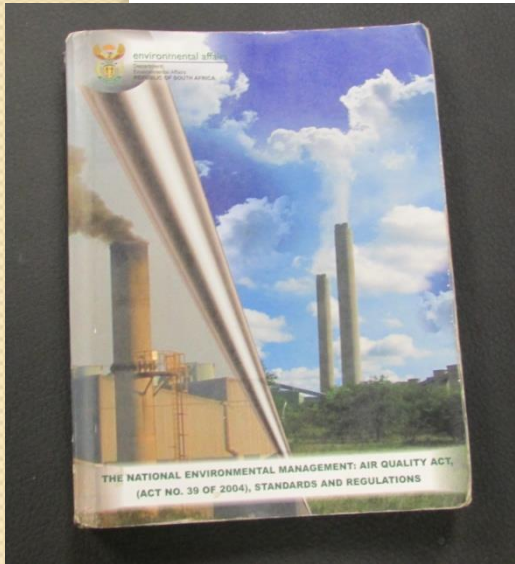
NATIONAL ENVIRONMENTAL MANAGEMENT ACT 107 OF 1998

(Gazette No. 19519, Notice No. 1540. Commencement date: 29 January 1999 [Proc. No. 8, Gazette No.19703])

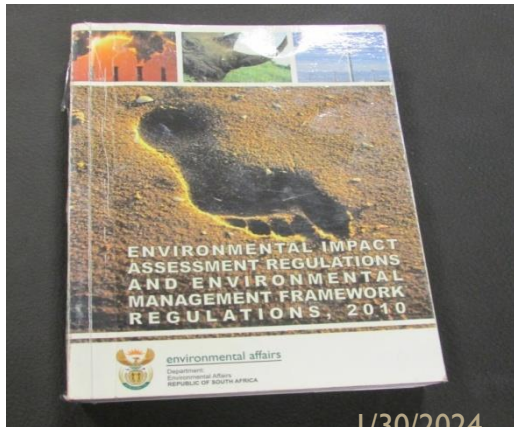
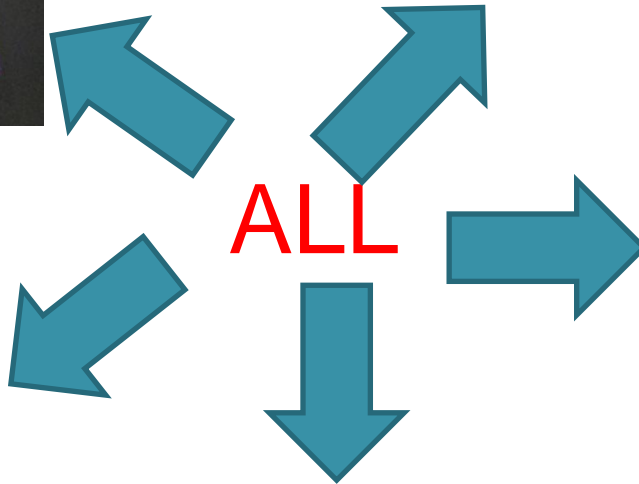
N  
E  
M  
A

+

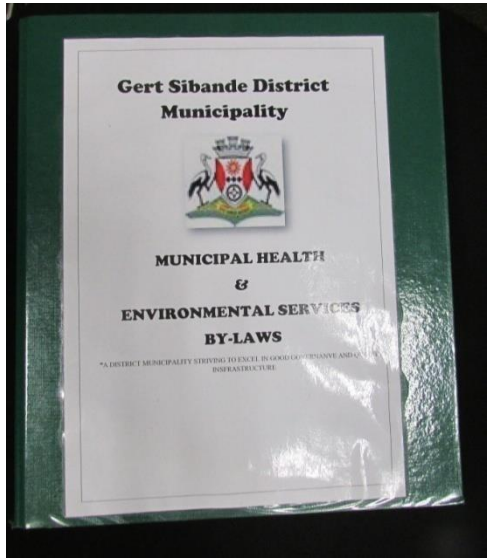
S  
E  
M  
A  
S



NEM:AQA



EIA  
REGULATIONS



GSDM BY-  
LAWS

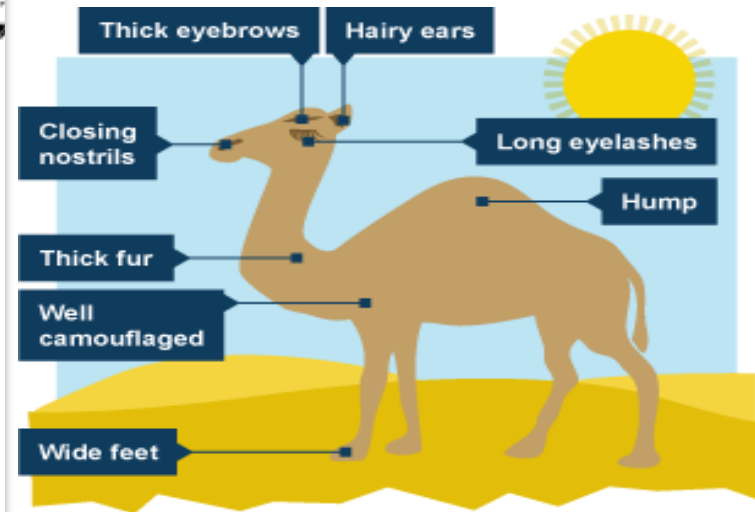
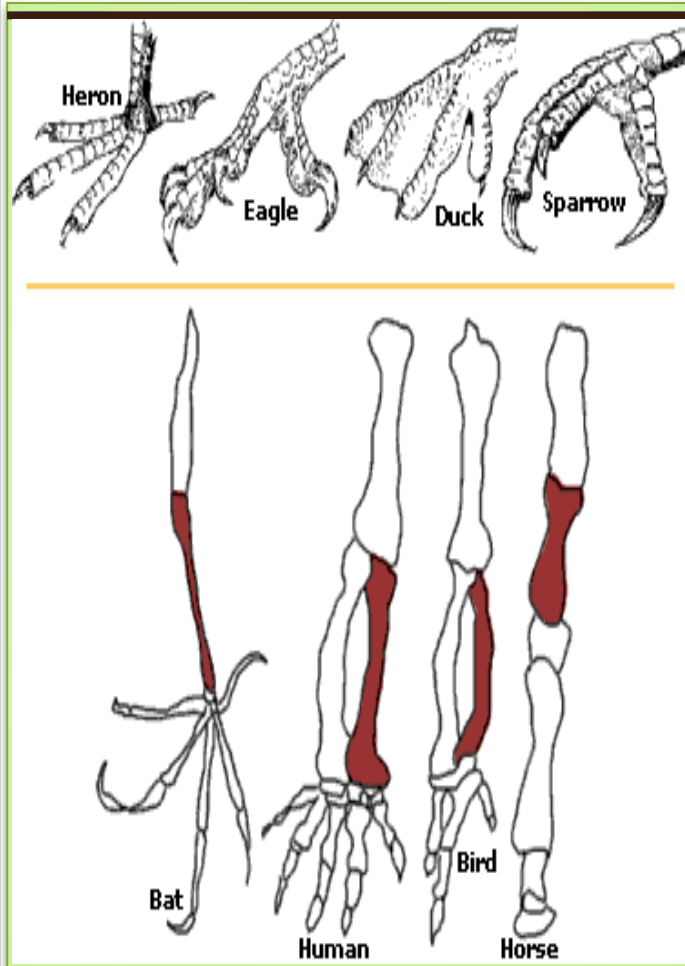
# The GSDM Climate Change Vulnerability Assessment, Adaptation and Response Strategy



South Africa's "aspirational goal" on **adaptation** is to build resilience and adaptive capacity to respond to climate change risk and vulnerability; whilst providing guidance on the integration of climate change responses into current and future development objectives; through optimising policy, planning, and implementation coherence of climate change adaptation actions,

DEA National Adaptation Strategy, 2016.

# ADAPTATION??????????



# The GSDM Climate Change Vulnerability Assessment, Adaptation and Response Strategy



## Why develop a CC strategy (adapted from DEA National Adaptation Strategy, 2016):-

- Act as the primary guidance document for climate change adaptation efforts in its 07 LMs;
- Providing direction for all stakeholders within the district;
- Inform local development planning;
- Help gauge the degree to which development initiatives integrate and reflect critical climate change adaptation priorities;

# The GSDM Climate Change Vulnerability Assessment, Adaptation and Response Strategy



...../ cont...

- Inform levels of resource allocation from revenue streams related to climate change resilience;
- Support the district in meeting its international obligations by demonstrating progress on climate change adaptation; and
- Guide stronger coherence and coordination on climate change adaptation between different institutions.

# **The GSDM Climate Change Vulnerability Assessment, Adaptation and Response Strategy**

Gert Sibande District Municipality acknowledges that climate change poses a threat to the environment, its residents, and future development.

Actions are required to reduce carbon emissions (mitigation), and prepare for the changes that are projected to take place (adaptation) in the District.

Gert Sibande District Municipality has therefore prioritised the development of a Climate Change Vulnerability Assessment and Response Plan.

# Themes of focus:-



1. Agriculture
2. Biodiversity and Environment
3. Human Health
4. Human Settlements
5. Water

# The GSDM Strategy Implementation Plan



- Major key issues of note
  - Community participation:-
    - Education and awareness initiatives ensuring measurable increase in education and awareness on climate change management issues. This involves engagements with communities in the LMs in the planning and implementation of actions to respond to climate change and awareness such as on effects of domestic fuel burning, waste and biomass burning;

# The GSDM Strategy Implementation Plan



- Key issues of note
  - Inter-sectoral cooperation and collaboration
- The development of partnerships and mechanisms of cooperation and collaboration between various sectors to adapt and to act to the consequences of climate change Synergy between climate change adaptation and other various initiatives;
- & then **MONITORING, REPORTING AND EVALUATION**









1/30/2024



1/30/2024

# Recommendations



- **Inputs requested from the various stakeholders;**
- **Report any CC implementation from individual corners;**
- **You already are implementing the CC strategy at your LM, just package it accordingly for implementation;**
- **Please be active in GSDM engagement / education and awareness platforms.**

The background of the slide features the coat of arms of the City of Grahamstown. It includes a central shield with a red sunburst, a gear, and a cross. The shield is flanked by two white storks with red beaks and legs. Above the shield is a grey crown. Below the shield is a green base with a yellow banner that reads "SPECTAMUR AGENDO".

**COMMUNITY AND SOCIAL SERVICES**  
**MUNICIPAL HEALTH & ENVIRONMENTAL SERVICES**

017 801 7000

[records@gsibande.gov.za](mailto:records@gsibande.gov.za)

**THANK YOU**