



THE PRESIDENCY
REPUBLIC OF SOUTH AFRICA



JUST ENERGY
TRANSITION

Just Energy Transition (JET) Implementation

Presentation on Skills Portfolio

Skills for a Just Climate Transition Indaba

30 October 2024

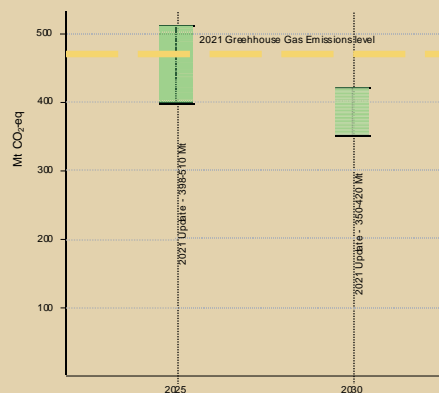


JET Investment Plan 2023-2027

Published in 2022, South Africa's **JET IP 2023–2027** sets out the **scale of need and the early-stage investments** required for the country's Just Transition (JT) to a low-carbon and climate-resilient economy in line with its updated Nationally Determined Contribution (NDC) lodged with the United Nations Framework Convention on Climate Change (UNFCCC) in 2021.

To decarbonise the economy to within the target range by 2030

350-420 Mt CO₂ eq



requires initial funding of

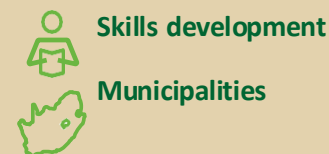
~ ZAR 1.5 trillion
over five years 2023-2027
from multiple sources

- Developed countries
- Private sector investors
- Development Finance Institutions
- Government
- Philanthropies
- Multilateral Development Banks

in three priority sectors



and two cross-cutting areas

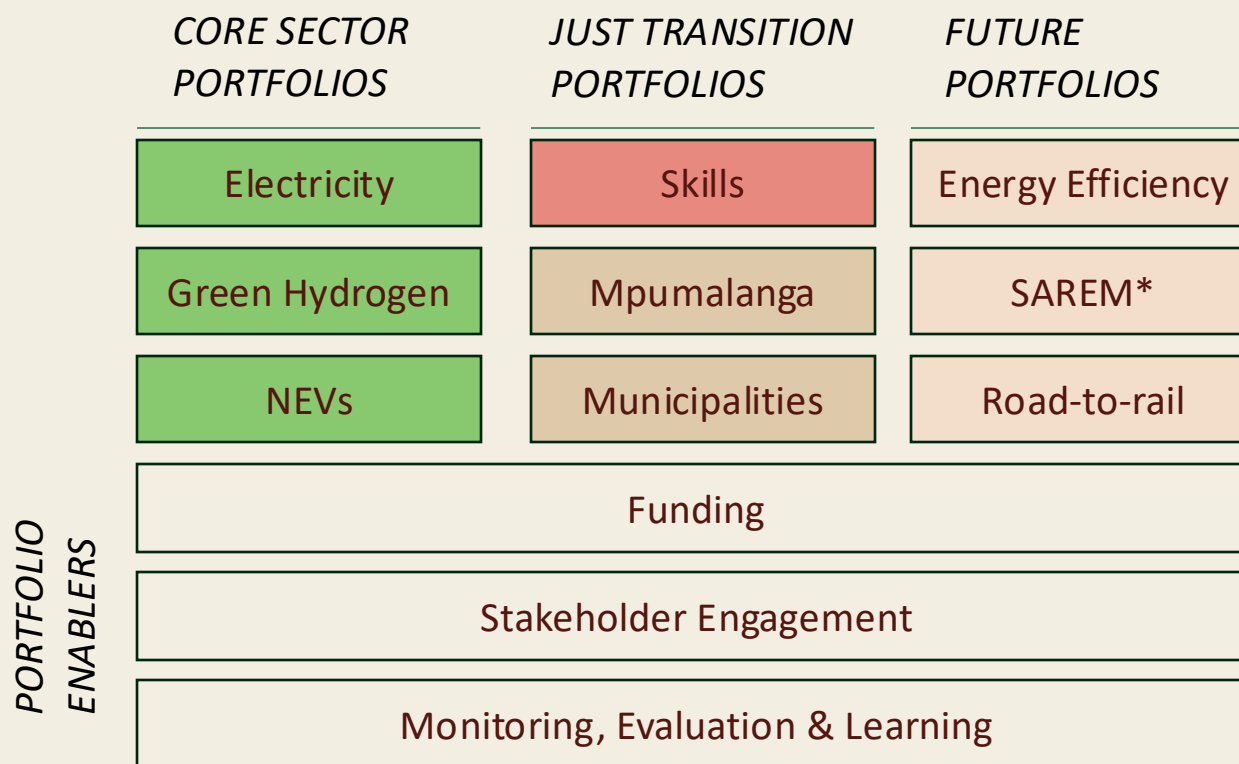


through a
Just Energy Transition
that

- Protects vulnerable workers and communities
- Builds energy security
- Expands energy access
- Promotes industrial development
- Drives innovation
- Develops sustainable livelihoods
- Enables economic diversification
- Spurs inclusive economic growth

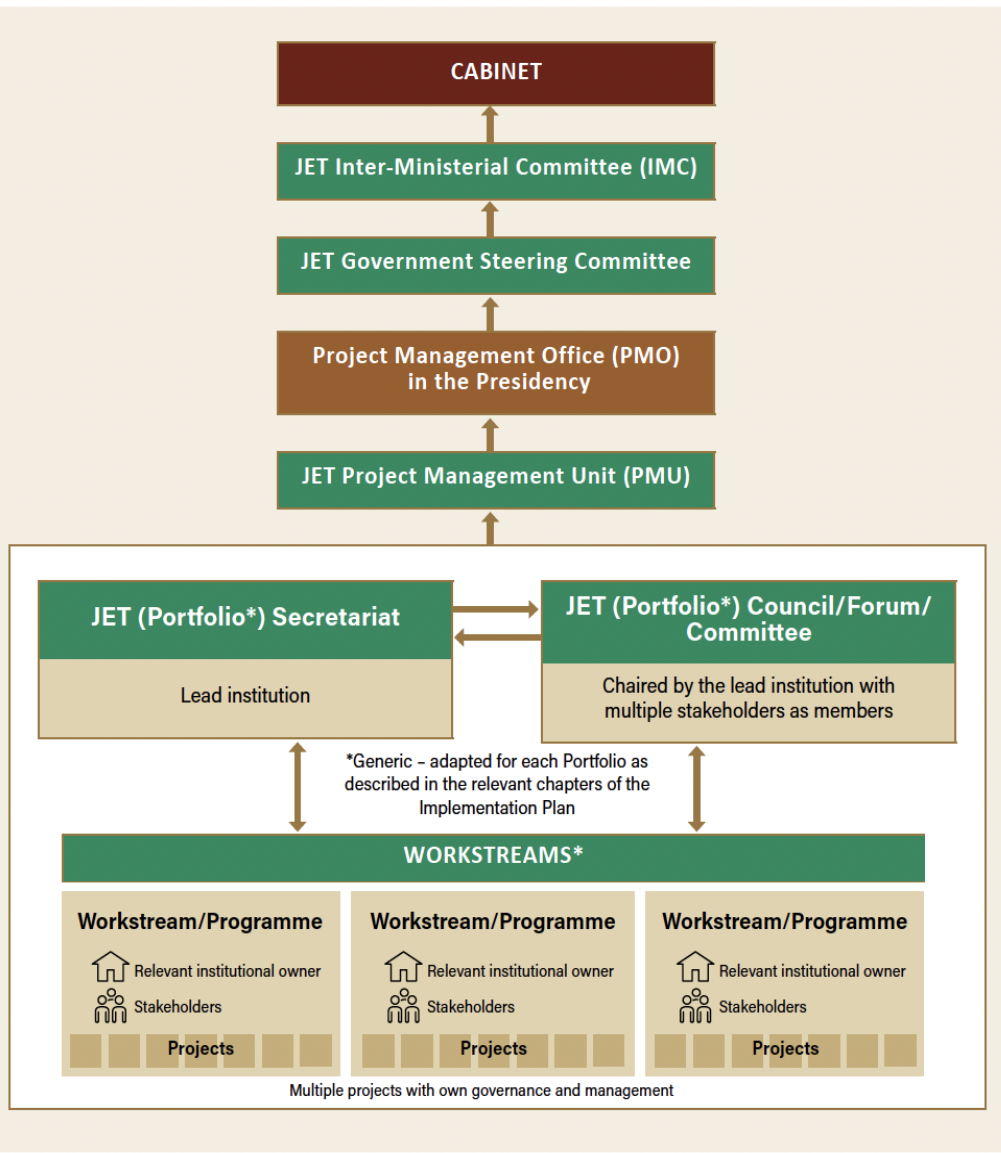
JET Implementation Plan Portfolios

The *JET Implementation Plan* is a **roadmap** that enables South Africa to take targeted strides towards meeting its **decarbonisation** commitments in a manner that delivers **just outcomes** for those affected by the energy transition and that contributes to **inclusive economic growth, energy security, and employment**.



*South African Renewable Energy Masterplan

Portfolio governance and architecture



JET national governance structure which supports inter-sectoral and inter-governmental co-ordination, with the **JET PMU** providing the roadmap for implementation

Architecture for JET portfolio governance and implementation

Implementation for the Skills Portfolio



Nov'23 – JET Implementation Plan is approved by Cabinet providing a roadmap for building institutional capacity and skills programmes



Apr'24 – NBi launches the Just Energy Transition Skills for Employment Programme (JET SEP)



Oct'24 – DHET to host the JET Skills Desk as the lead Institution



National JET Skills Advisory Forum to be established in HRDC

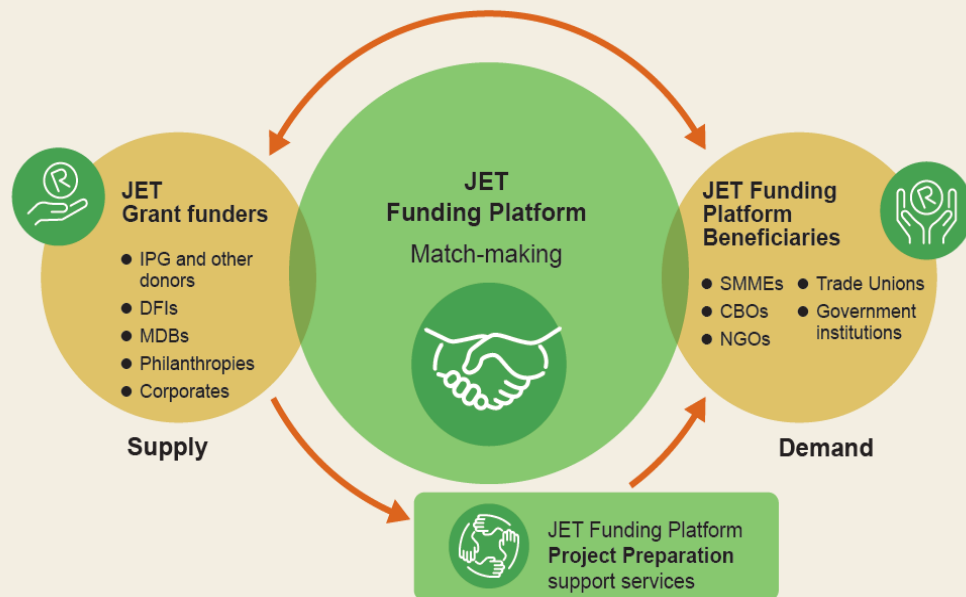


Practical scale up of Skills Development Zone directed at skills anticipation, development, and utilisation across core JET Portfolios

Access to finance – JET Funding Platform

The JET PMU is increasing the quantum and improving access to JET grant funding with the launch of the JET Funding Platform in 2024:

- A **matchmaker** between suppliers of grant funding and potential JET beneficiaries (it is not a fund)
 - Providing **project preparation** support services to JET project originators to help them prepare plans and apply for grants, and
 - Providing the public with **regular analysis** of the deployment of grant funds to JET projects.
- Go to jetfundingplatform.org.za



April 2024

May 2024

July/August 2024

September 2024

October 2024

Resourcing
PMU skills
for JET FP

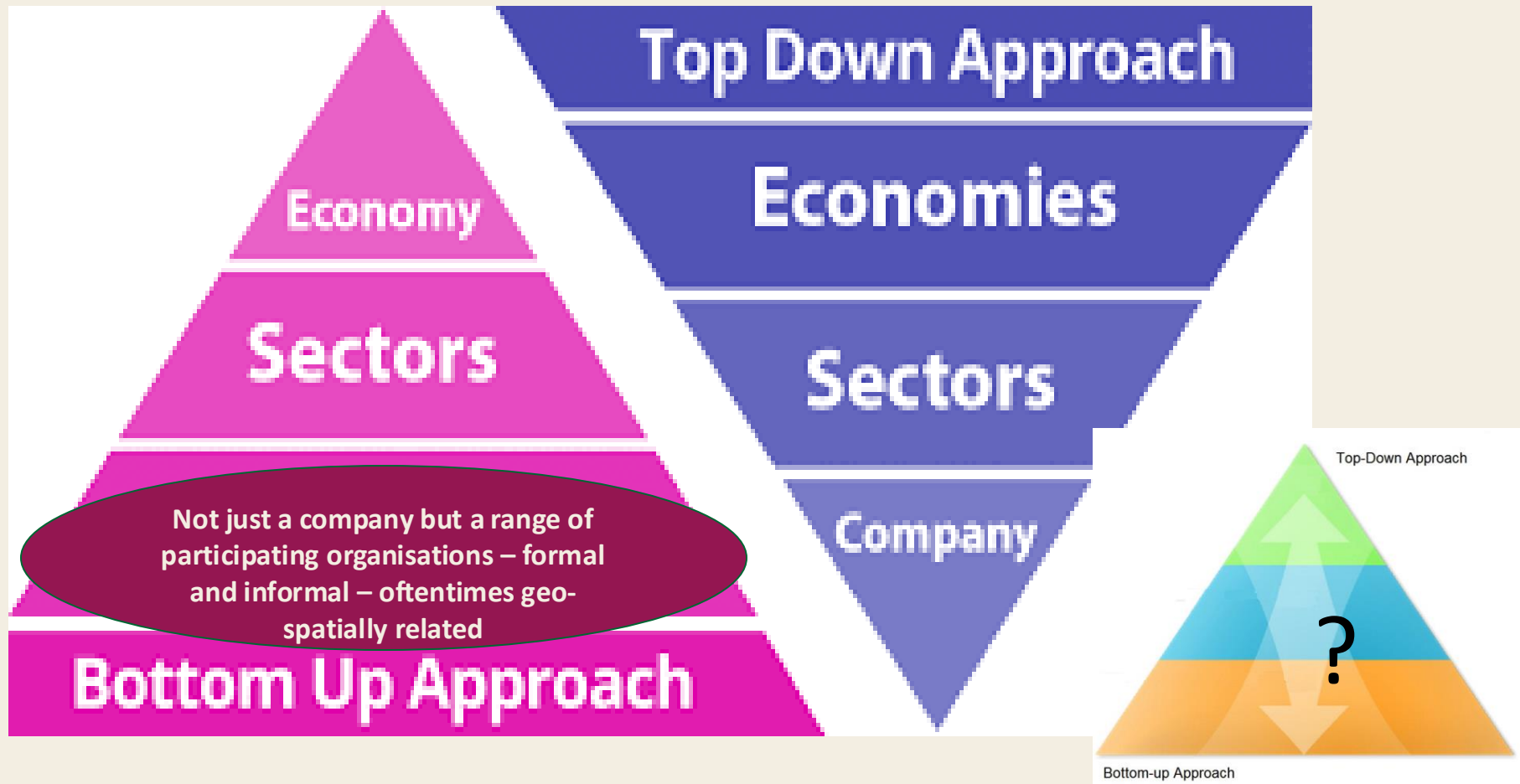
JET FP
Advisory
Committee
established

Technical services for
registries and systems
set-ups

Systems, processes,
communications
finalised

Official JET FP
launch

What kinds of skills planning methodologies, models and unit/s of analysis?



The problem of overly generic, top-down skills planning when **issues are emergent, and oftentimes place-based / geo-spatially framed and complex** – requiring responsive, generative and co-engaged forms of skills development and planning

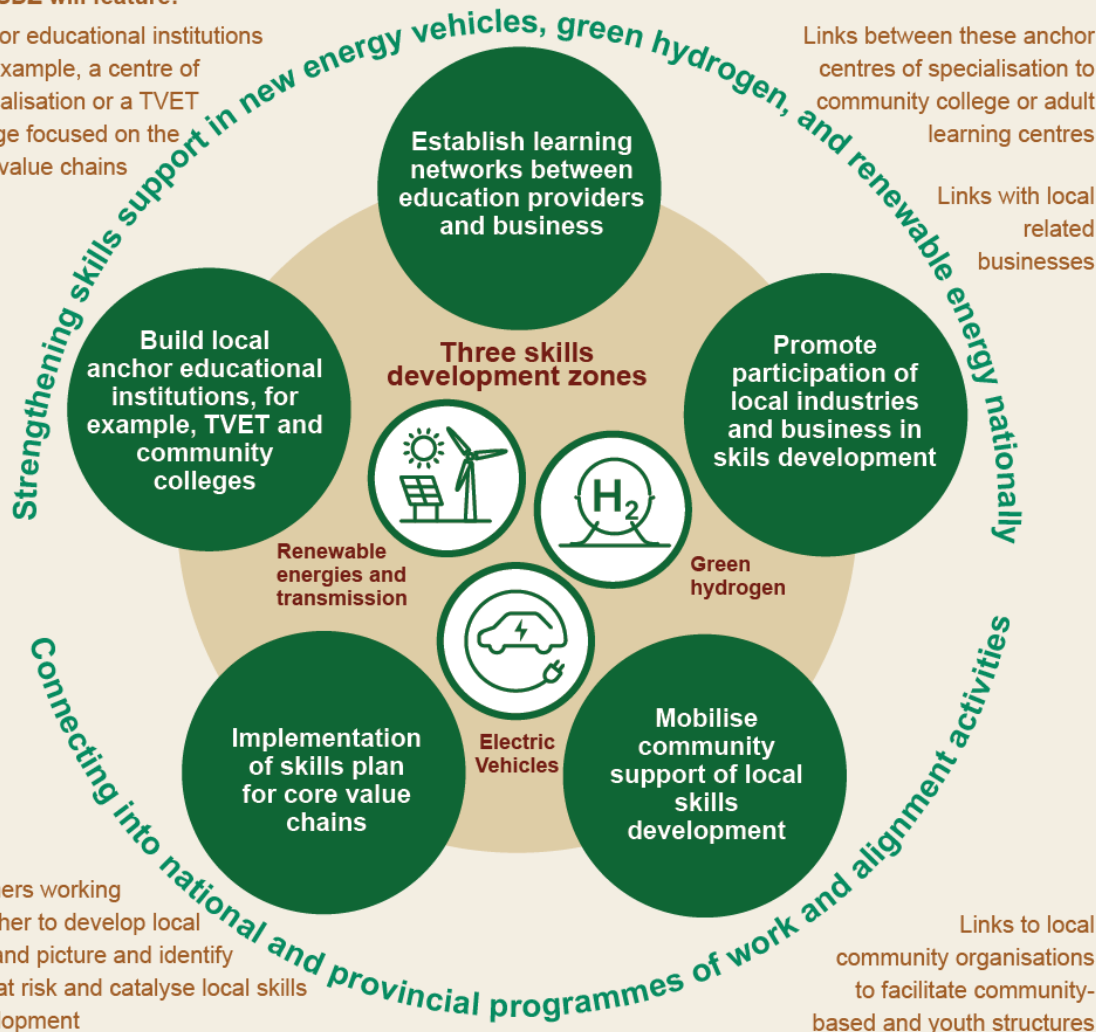
Establish Skills Development Zones (local learning networks) focused on three core value chains

The SDZ will feature:

Anchor educational institutions
(for example, a centre of
specialisation or a TVET
college focused on the
core value chains

Links between these anchor
centres of specialisation to
community college or adult
learning centres

Links with local
related
businesses



SDZ s

- To catalyse, innovate and promote investment, we need to establish and resource three SDZs.
- These will comprise centres of specialisation at anchor educational institutions, but within a learning network for greater alignment of skills supply and workplace demand in three core value chains. The SDZs will be established in Mpumalanga (RE and Tx), Eastern Cape (EVs) and Northern Cape (GH2) and will drive local community projects that foster local economic development, as well as skills development in and between core value chains across the country.
- The SDZ will feature the following:
 - Anchor educational institutions (for example, a centre of specialisation or a TVET college focused on the core value chains)
 - Links between these anchor centres of specialisation to community colleges or adult learning centres
 - Links with local related businesses
 - Links to local community organisations to facilitate community based and youth structures
 - Partners working together to develop local demand pictures, identify jobs at risk, and catalyse local skills development.

Place-based learning: grounded, reiterative and co-defining process of learning that recognize communities of practice as peer contributors to solution outcomes.

Place-based learning surfaces local knowledge systems, epistemologies, logics and cognitive structure as such it is “continually an act of engaged/active learning”

Therefore, place-based learning is not only about understanding the geo-locality but is geared more towards bringing the knowledge, struggles and rights of local communities to forefront as a means of developing “alternative research approaches that address the limitations of conventional methods”

Emerging insights on JT initiatives in Mpumalanga

Number of Initiatives by Sector

Solar PV – 6
Water – 15
Renewable energy - 16
Agriculture - 4
Biomass - 1
Green Hydrogen - 6
Health & Welfare – 1
Capacity building - 3
Diversifying local economies - 14
Electric vehicles- 1
Green Economy - 2
JT broadly - 7
Women and Youth - 2



**Skills focus -
11**



Implementors:

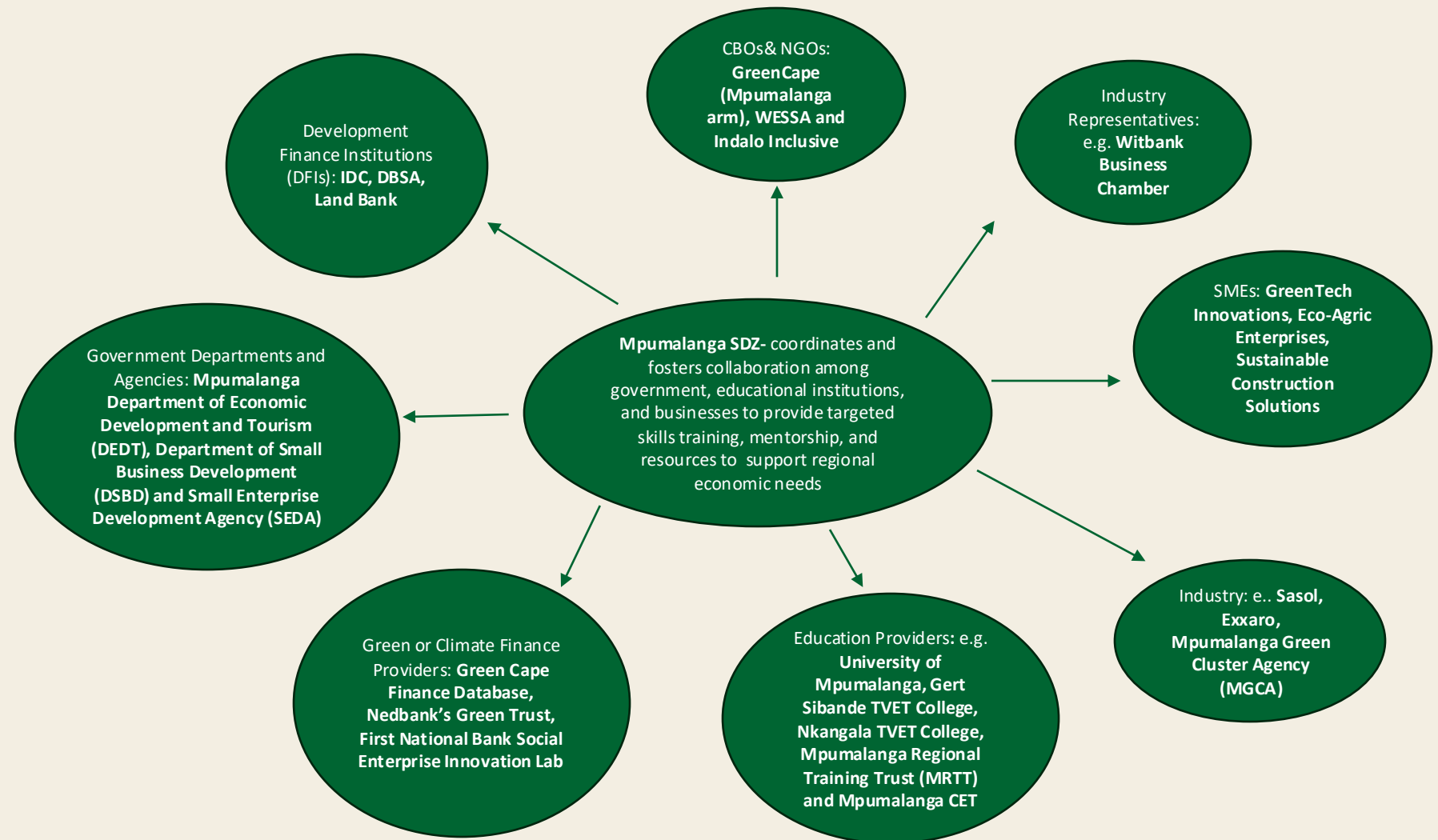
85% of the initiatives (mapping is on-going) are being implemented partially or fully by Non-Profit Organisations

Other implementing partners include Government, Development Agencies Private Companies (e.g. SOLA Group, ENERTRAG, AdsolarTech), NPOs (e.g. SAWEA) & Universities (e.g. UP, UNISA, Wits, Limpopo etc)

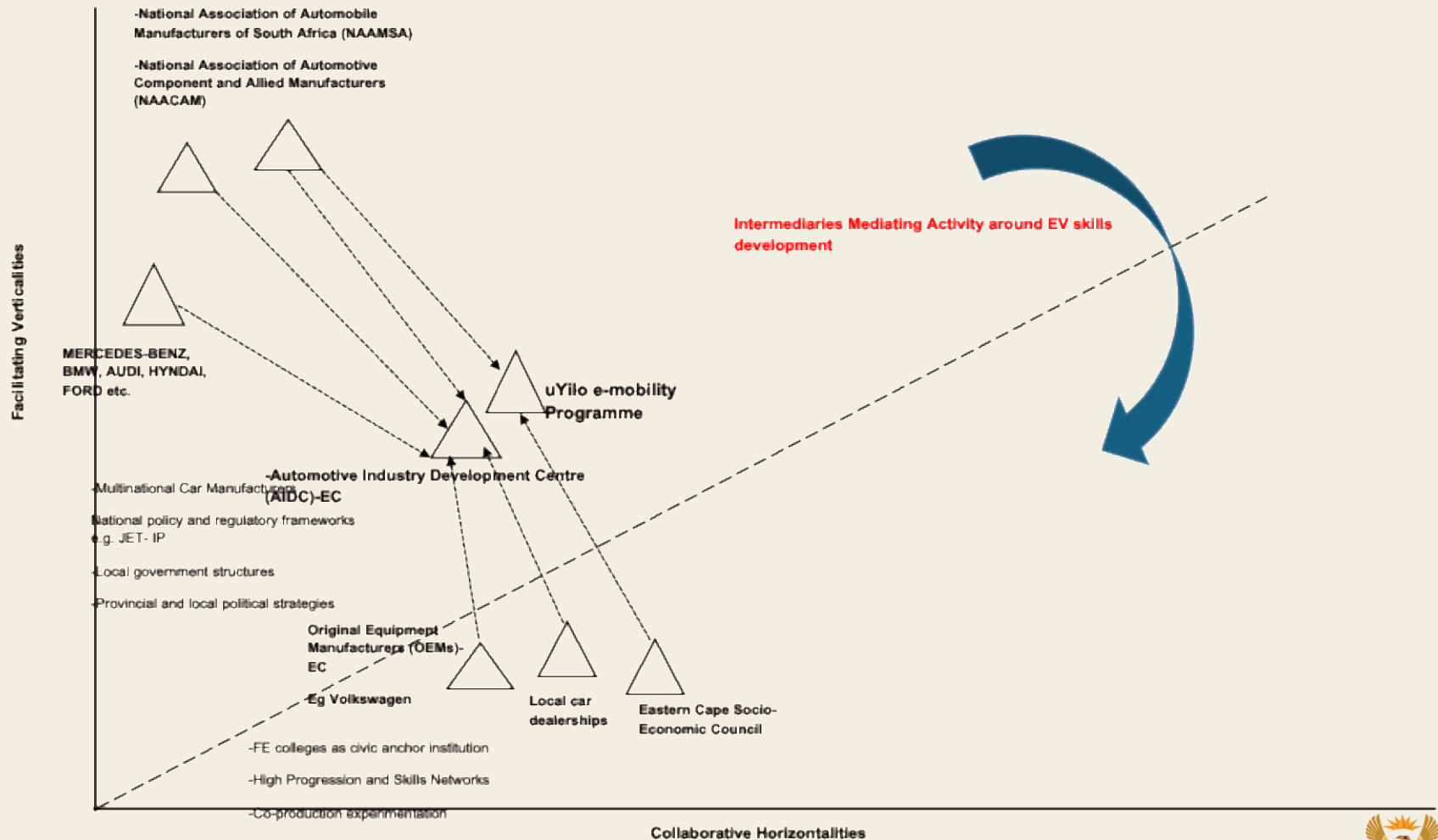


THE PRESIDENCY
REPUBLIC OF SOUTH AFRICA

Conceptual Outline of a potential MPM SDZ



Conceptual Outline of a potential Eastern Cape SDZ



Thank you
